

Jeavons Wood Primary School – Science Knowledge Organiser

Topic: Plants

Year: 2

Strand: Biology

Big Question: Can I grow a plant?

What should I already know?

- *Plants can grow.
- *The names of some common garden plants (e.g. poppy, rose) and the names of some common wild plants (e.g. daisy, dandelion, nettle).
- *Deciduous trees lose their leaves in the autumn every year.
- *Evergreen trees have green leaves all year round.
- *The parts of a plant including petals, fruits, roots, bulbs, seeds, stem, trunks and branches.

What will I know by the end of the unit?

Pupils should be taught to	<ul style="list-style-type: none"> *observe and describe how seeds and bulbs grow into mature plants *find out and describe how plants need water, light and a suitable temperature to grow and stay healthy
Plants are living things and require things to grow.	<ul style="list-style-type: none"> *Plants require things such as water, warmth, nutrients from soil and light to grow. *If they do not have one or more of these things, they may stop growing. *Plants can: move, grow, react to their surroundings (sense) absorb nutrients, reproduce
Which plants do we eat?	<ul style="list-style-type: none"> *Many plants provide us with food by bearing fruits which carry their seeds. *When farmers grow plants to provide us with food, these are called crops. *We eat many fruits that contain seeds (including tomatoes!). *We also eat different parts of vegetable plants: root vegetables (carrots, potatoes), stem vegetables (celery, spring onion), leafy vegetables (cabbage, lettuce), flowering vegetables (cauliflower, broccoli). We eat grains and cereals from plants too (wheat, oats). Nuts and seeds are also sometimes edible (sesame seeds, pumpkin seeds, peanuts). Many herbs are also grown to add flavour to foods.

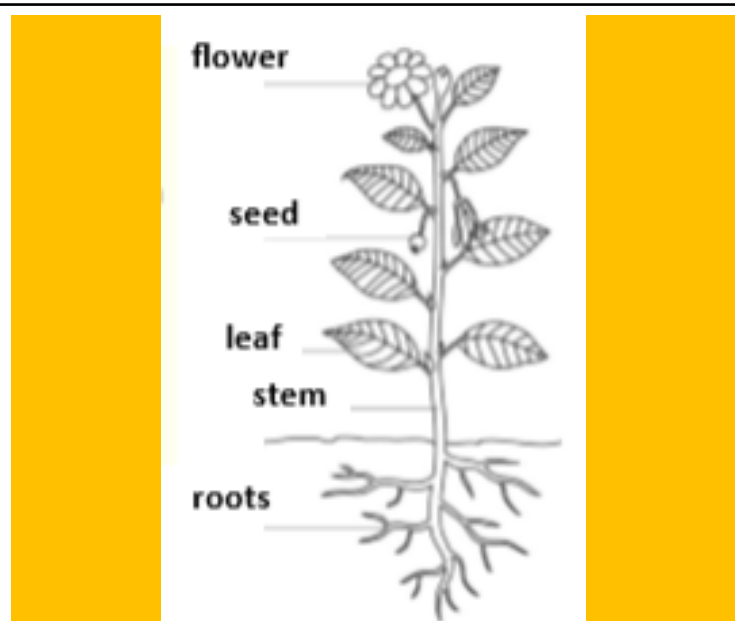
Where will my learning go next?

Yr 3: Identify and describe the functions of different parts of flowering plants: roots, stem/trunk, leaves and flowers. explore the requirements of plants for life and growth and how they vary from plant to plant. Investigate the way in which water is transported within plants. Explore the part that flowers play in the life cycle of flowering plants, including pollination, seed formation and seed dispersal.

Vocabulary

branches	parts that grow out from the tree trunk and have leaves, flowers, or fruit growing on them
bulb	a root shaped like an onion that grows into a flower or plant
crop	plants such as wheat and potatoes that are grown in large quantities for food
deciduous	a tree that loses its leaves in the autumn every year
evergreen	a tree or bush which has green leaves all the year round
flower	the part of a plant which is often brightly coloured and grows at the end of a stem
flowering	trees or plants which produce flowers
fruit	something which grows on a tree or bush and which contains seeds or a stone covered by a substance that you can eat
germination	The seed is beginning to grow
herb	a plant whose leaves are used in cooking to add flavour to food, or as a medicine
leaf/leaves	the parts of a tree or plant that are flat, thin, and usually green
nutrients	substances that help plants and animals to grow
petal	thin coloured or white parts which form part of the flower
plant	a living thing that grows in the earth and has a stem, leaves, and roots
reproduce	when an animal or plant produces one or more individuals similar to itself
roots	the parts of a plant that grow under the ground
seed	the small, hard part from which a new plant grows
stem	the thin, upright part of a plant on which the flowers and leaves grow
tree	a tall plant that has a hard trunk, branches, and leaves
trunk	the large main stem from which the branches grow
vegetable	plants such as cabbages, potatoes, and onions which you can cook and eat
vegetation	plants, trees and flowers
weed	a wild plant that grows in garden and prevents the plants that you want from growing properly
wild	animals or plants that live or grow in natural surroundings and are not looked after by people

Diagrams



Jeavons Wood Primary School – Science Knowledge Organiser

Topic: Plants


Year: 2

Strand: Biology

Big Question: Can I grow a plant?

Question 1: Which three living processes do plants do?	Start of unit:	End of unit:
move		
grow		
walk		
reproduce		

Question 2: Which three things does a plant need to grow well?	Start of unit:	End of unit:
water, exercise, wind		
soil, water, wind		
soil, sunlight, water		
water, darkness, soil		

Question 3: What is happening in this picture?	Start of unit:	End of unit:
		
the plant has fallen over		
the plant is growing towards the light		
the roots are not strong enough to keep the plant straight		
the flower is trying to look out of the window		

Question 4: Four identical seeds have been planted at the same time. Which of them will produce the tallest and healthiest seedling?	Start of unit:	End of unit:
The seed that has been watered and kept in the cupboard.		
The seed that has been watered and kept in a fridge.		
The seed that has been placed on a wet cotton ball.		
The seed that has been watered and placed on a windowsill.		

Question 5: Match these vegetables to the part of the plant they come from:	Start of unit:	End of unit:								
<table style="width: 100%; border: none;"> <tr> <td style="border: 1px solid black; padding: 5px; width: 50%;">root</td> <td style="border: 1px solid black; padding: 5px; width: 50%;">cauliflower</td> </tr> <tr> <td style="border: 1px solid black; padding: 5px;">stem</td> <td style="border: 1px solid black; padding: 5px;">carrot</td> </tr> <tr> <td style="border: 1px solid black; padding: 5px;">leaf</td> <td style="border: 1px solid black; padding: 5px;">cabbage</td> </tr> <tr> <td style="border: 1px solid black; padding: 5px;">flower</td> <td style="border: 1px solid black; padding: 5px;">celery</td> </tr> </table>	root	cauliflower	stem	carrot	leaf	cabbage	flower	celery		
root	cauliflower									
stem	carrot									
leaf	cabbage									
flower	celery									